

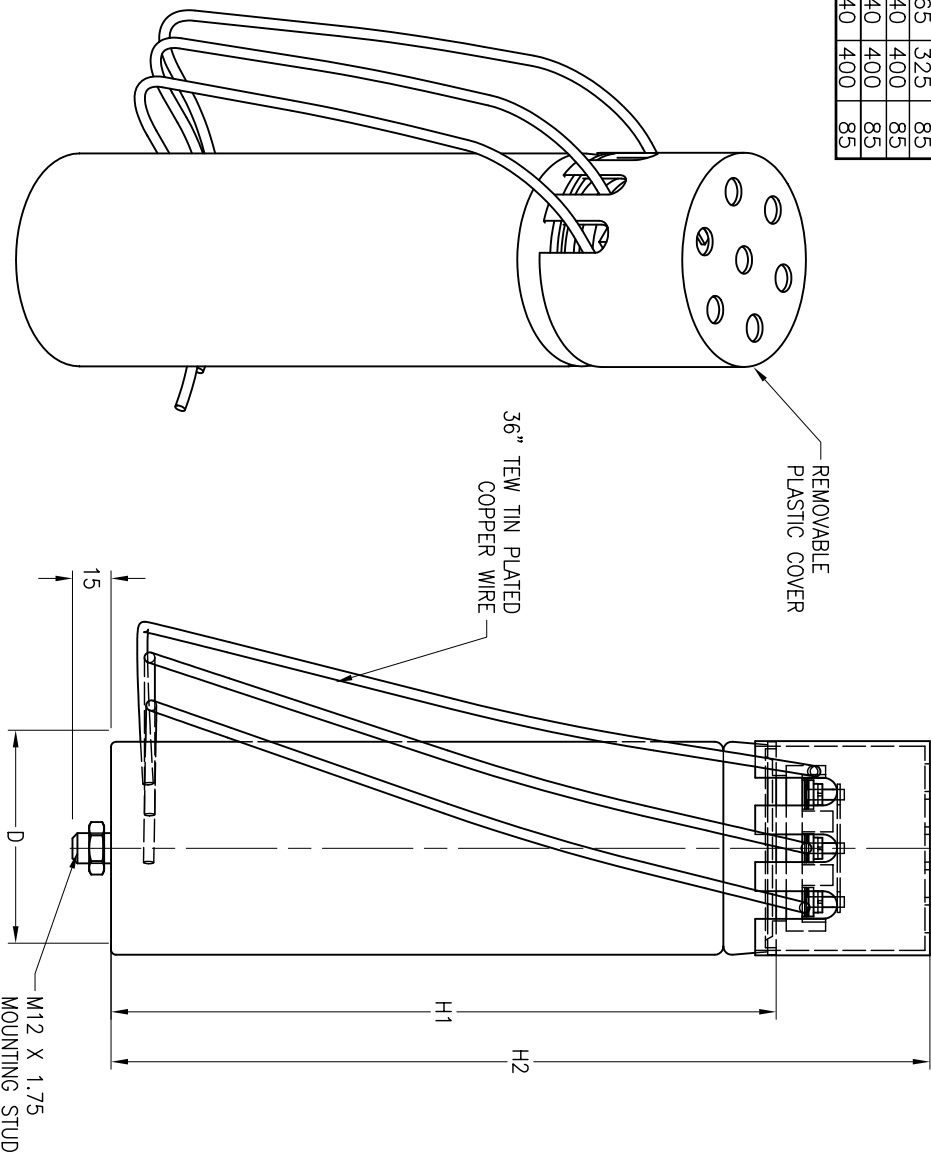
Volts	kVA	Amps	H1	H2	D
208	4.9	13.6	265	316	65
	9.8	27.2	265	325	85
	3.0	3.6	190	241	65
	4.0	4.8	265	316	65
	5.0	6.0	190	241	65
480	6.7	8.0	190	241	65
	8.3	10.0	190	241	65
	10.0	12.0	265	316	65
	12.5	15.0	190	250	85
	15.0	18.0	190	250	85
600	20.0	24.0	265	325	85
	25.0	30.0	265	325	85
	5.0	4.8	190	241	65
	6.3	6.1	265	316	65
	8.3	8.0	190	250	85
999	10.0	9.6	190	250	85
	12.5	12.0	265	325	85
	15.0	14.4	265	325	85
	20.0	19.0	340	400	85
	25.0	24.1	340	400	85
	28.0	16.2	340	400	85

1 MINUTE WARNING LABEL, SUPPLIED LOOSE, TO BE PLACED ON CAPACITOR ENCLOSURE

CAUTION
DISCONNECT SUPPLY BEFORE OPENING
DÉBRANCHER LE COURANT
AVANT OUVERTURE

WARNING:
INTERNAL DISCHARGE DEVICE FITTED,
WAIT ONE MINUTE AFTER
DISCONNECTING FROM SUPPLY
BEFORE TOUCHING LIVE PARTS.

AVERTISSEMENT
MUNI D'UN APPAREIL DE
DÉCHARGE INTERIEUR.
ATTENDEZ UNE MINUTE APRÈS
OUVERTURE, DU COURANT AVANT
DE TOUCHER LES BORNES ALIMENTÉES.



5 MINUTE WARNING LABEL, SUPPLIED LOOSE, TO BE PLACED ON CAPACITOR DISCONNECT ENCLOSURE

WARNING:
CAPACITOR CIRCUIT
WAIT 5 MINUTES AFTER
OPENING, THEN SHORT
CIRCUIT CAPACITORS
BEFORE HANDLING.

AVERTISSEMENT:
CIRCUIT DU CONDENSATEUR
ATTENDEZ 5 MINUTES
APRÈS DÉBRANCHEMENT,
ENSUITE COURT-CIRCUITEZ
LES CONDENSATEURS
AVANT DE MANIPULER.

5 MINUTE WARNING LABEL TO BE PLACED ON DISCONNECT OF CAPACITOR ENCLOSURE

- Notes:**
1. Discharge resistors provided.
 2. All dimensions in mm unless noted otherwise.

This drawing is the property of Electrotek Ltd. The information and technology herein may not be used nor reproduced without the written permission of Electrotek Ltd. All reproductions, in whole or in part, including shop drawings, shall refer to this clause.

Revised: 08/04/05

Title: Typical Loose Capacitor

Model: R333

ELECTROTEK LTD
10116 34 AV SE Calgary, AB
T2G 1V4 Canada
Tel: 403 287 2200 Fax: 403 287 3808
contact@electrotekltd.com
www.electrotekltd.com